

Superintendent Report of Progress: Data Update

March 12, 2026
Dr. Margo Ferrick



Agenda



- 1. Penn Brook Data**
 - a. Student Attendance
 - b. Staff and Student Climate Data
 - c. iReady

- 2. Georgetown Middle School**
 - a. Student Attendance
 - b. Staff and Student Climate Data
 - c. iReady
 - d. % of students receiving A and B

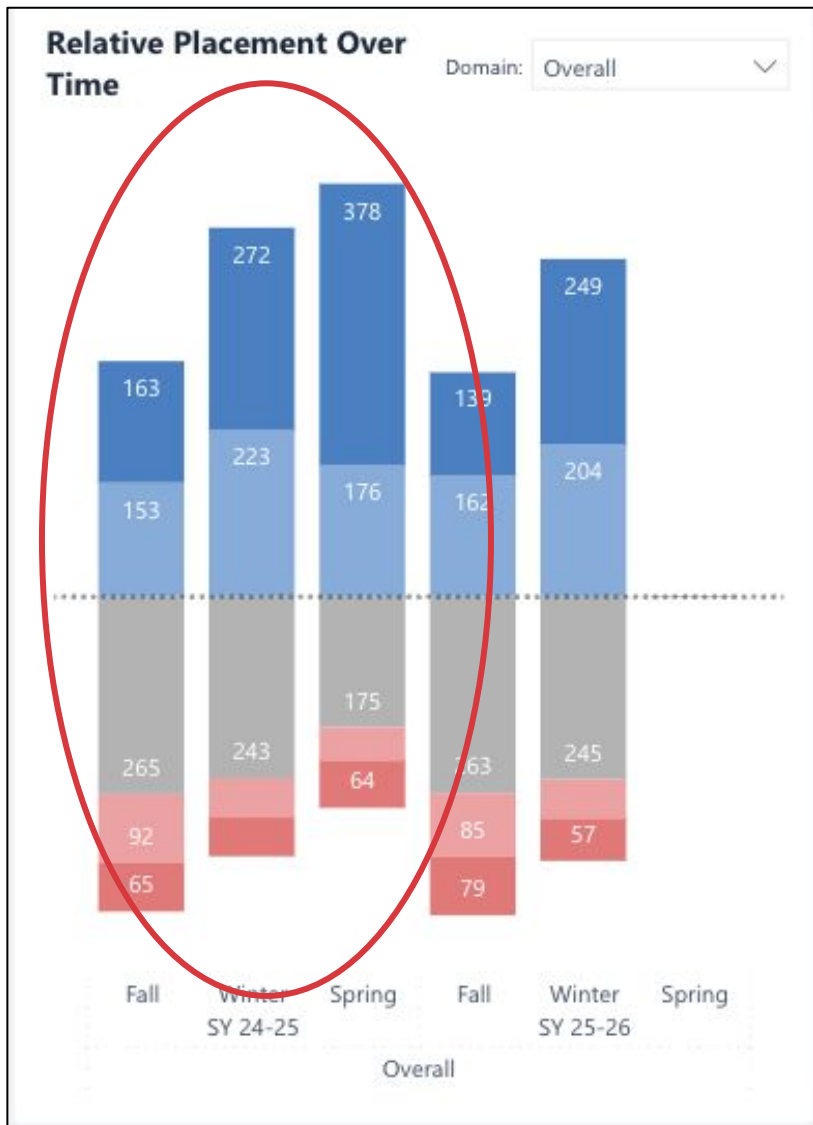
- 3. Georgetown High School**
 - a. Student Attendance
 - b. Staff and Student Climate Data
 - c. % of students receiving A and B
 - d. Quarterly change in GPA

About the Data: PBIS Climate Survey



PBIS Climate Survey - Students (15-20 minutes)

- Reliable and valid tool to assess perceived school climate amongst students
- 4 point rating scale
 - Elementary (grades 3-5): 11 questions rate from Never - Always
 - Secondary (grades 6-12): 36 questions rating from Strongly agree to strongly disagree
- **PBIS Climate Survey - Staff (10 minutes)**
- Staff perception data on 6 subscales
- 4 point rating scale
 - 29 items rating from strongly agree to strongly disagree



IReady Assessment

- ELA and Math Assessments Grades K-8
- ELA assessment measures what students know in each domain of reading (i.e., Phonics, Phonemic Awareness, Vocabulary, and Comprehension)
- Mathematics assessment measures what students know in math (i.e., Number and Operations, Algebra and Algebraic Thinking, Geometry, and Measurement and Data)
- Shows how much growth learners need to reach grade-level expectations

This graph is an example of the data for all grades K-8 during SY25. You can see that 21% of all students entered the SY24 either on or above grade level. Another 21% were at the early on stage of grade level and 36% entered their new grade 1 grade level below with the remaining 12% a minimum of 2 grade levels below.

About the Data: IReady



- Currently 56.1 % of students K-8 are on or above grade level in ELA compared to 41.3% in the fall
- Currently 43.9 % of students K-8 are on or above grade level in Math compared to 27% in the fall

ELA



MATH



About the Data: Iready





Penn Brook Data



Significant increase in student attendance over the last two year SY24

Increase in the second half of this school year over SY25



Penn Brook: Average Daily Attendance



Penn Brook

PBIS Climate STUDENT



The scoring scale is based on a 1-4 range

- For SY26 students ratings increased in all areas of the survey compared to SY25 with an overall score increase by 7%
- The largest increases from SY25 to SY26 were:
 - 13.8% “Students in my class behave so that teachers can teach”
 - 12.6% “Students treat each other well”

SCHOOL CLIMATE SURVEY: STUDENT				
PENN BROOK				
CLIMATE SURVEY ITEMS:	12/20/2024	6/9/2025	10/17/2025	Comparison 6/25-10/25
1. I LIKE SCHOOL	2.4	2.29	2.45	7%
2. I FEEL LIKE I DO WELL IN SCHOOL	3.01	2.93	3.03	3.40%
3. MY SCHOOL WANTS ME TO DO WELL	3.57	3.42	3.57	4.40%
4. MY SCHOOL HAS CLEAR RULES FOR BEHAVIOR	3.25	3.14	3.39	8%
5. TEACHERS TREAT ME RESPECT	3.33	3.16	3.35	6%
6. GOOD BEHAVIOR IS NOTICED AT MY SCHOOL	2.59	2.45	2.67	9%
7. I GET ALONG WITH OTHER STUDENTS	3.03	2.91	3.08	5.80%
8. I FEEL SAFE AT SCHOOL	3.11	2.91	3.1	6.50%
9. STUDENTS TREAT EACH OTHER WELL	2.57	2.46	2.77	12.60%
10. THERE IS AN ADULT AT MY SCHOOL WHO WILL HELP ME IF I NEED IT	3.28	3.16	3.31	4.70%
11. STUDENTS IN MY CLASS BEHAVE SO THAT TEACHERS CAN TEACH	2.25	2.16	2.46	13.80%
MEAN SCORE FOR ALL SECTIONS:	2.94	2.82	3.02	7%

Penn Brook

PBIS Climate STAFF



The scoring scale is based on a 1-4 range

- For SY26 staff ratings increased in all areas of the survey compared to SY25 except for parent involvement
- Compared to SY25 the highest rating increase were
 - Peer/Adult Relations with a 8.9% increase
 - Physical Environment with a 7.2% increase

SCHOOL CLIMATE SURVEY: STAFF				
PENN BROOK				
CLIMATE SURVEY ITEMS:				
	12/2/2024 - 12/20/2024	5/18/2025 - 5/23/2025	10/6/2025 - 10/17/2025	Comparison 5/25 - 10/25
1. STAFF CONNECTEDNESS	3.53	3.43	3.56	3.80%
2. STRUCTURE FOR LEARNING	3.39	3.33	3.47	4.20%
3. SCHOOL SAFETY	3.13	3.01	3.2	6.30%
4. PHYSICAL ENVIRONMENT	3.25	3.18	3.41	7.20%
5. PEER/ADULT RELATIONS	2.85	2.72	2.96	8.90%
6. PARENT INVOLVEMENT	3.25	3.23	3.19	-1.23%
MEAN SCORE FOR ALL SECTIONS:	3.24	3.15	3.31	5.0%

Penn Brook iReady



IREADY 2025-2026 PENN BROOK

ELA

GRADE	FALL	WINTER	
1	15.60%	34.70%	
2	37.50%	69.50%	
3	63.20%	71.30%	
4	46.50%	57%	
5	35.60%	45.60%	
OVERALL	FALL 41.30%	WINTER 65.10%	ON OR ABOVE GRADE LEVEL

IREADY 2025-2026 PENN BROOK

MATH

GRADE	FALL	WINTER	
1	14.40%	20.40%	
2	16.30%	31.70%	
3	21.30%	42.60%	
4	31.40%	61.60%	
5	33.00%	55.60%	
OVERALL	FALL 23.28%	WINTER 42.38%	ON OR ABOVE GRADE LEVEL



Middle School Data



Almost on par
with last years
student
attendance for the
month of March



Middle School Average Daily Attendance

Middle School

PBIS Climate STUDENT



The scoring scale is based on a 1-4 range

- For SY26 students ratings increased by 8.8% over FY25
- The largest increases from SY25 to SY26 were:
 - 13.2% “Physical Environment ”
 - 12.2% “Adult Social Support”

SCHOOL CLIMATE SURVEY: STUDENT					
GEORGETOWN MIDDLE SCHOOL					
CLIMATE SURVEY ITEMS:					
	12/5/2024 - 12/20/2024	5/23/2025 - 6/4/2025	10/8/2025 - 10/17/2025	Comparison 5/25 - 10/25	
1. SCHOOL CONNECTEDNESS	2.76	2.6	2.83	8.80%	
2. PEER SOCIAL SUPPORT	3.29	3.11	3.32	6.80%	
3. ADULT SOCIAL SUPPORT	2.7	2.7	3.03	12.20%	
4. CULTURAL ACCEPTANCE	2.74	2.58	2.89	12%	
5. SOCIAL/CIVIC LEARNING	3.53	3.4	3.54	4.10%	
6. PHYSICAL ENVIRONMENT	2.72	2.57	2.91	13.20%	
7. SCHOOL SAFETY	3.08	3.09	3.24	4.90%	
8. ORDER AND DISCIPLINE	2.77	2.61	2.91	11.50%	
OVERALL SCORE	2.96	2.84	3.09	8.80%	

Middle School

PBIS Climate STAFF



The scoring scale is based on a 1-4 range

- For SY26 staff ratings increased overall by 5.8%
- Compared to SY25 the highest rating increase were
 - Peer/Adult Relations by 14.4%
 - Staff Connectedness by 5.3%

SCHOOL CLIMATE SURVEY: STAFF					
GEORGETOWN MIDDLE SCHOOL					
CLIMATE SURVEY ITEMS:					
	12/3/2024 - 12/20/2024	5/18/2025 - 5/23/2025	10/8/2025 - 10/17/2025	Comparison 5/25 - 10/25	
1. STAFF CONNECTEDNESS	3.5	3.41	3.59	5.30%	
2. STRUCTURE FOR LEARNING	3.39	3.29	3.44	4.60%	
3. SCHOOL SAFETY	3.26	3.18	3.37	6	
4. PHYSICAL ENVIRONMENT	3.5	3.46	3.56	2.90%	
5. PEER/ADULT RELATIONS	2.47	2.36	2.7	14.40%	
6. PARENT INVOLVEMENT	2.83	3.04	2.98	-2%	
OVERALL SCORE	3.16	3.1	3.28	5.80%	

Middle School

iReady



IREADY 2025-2026 MIDDLE SCHOOL					
ELA					
GRADE	FALL		WINTER		
6	45.70%		64.80%		
7	45.90%		55.40%		
8	42.20%		43.60%		
OVERALL	FALL	44.60%	WINTER	54.60%	ON OR ABOVE GRADE LEVEL

IREADY 2025-2026 MIDDLE SCHOOL					
MATH					
GRADE	FALL		WINTER		
6	48.90%		54.40%		
7	32.50%		46.20%		
8	20.00%		41.80%		
OVERALL	FALL	33.50%	WINTER	47.4%	ON OR ABOVE GRADE LEVEL

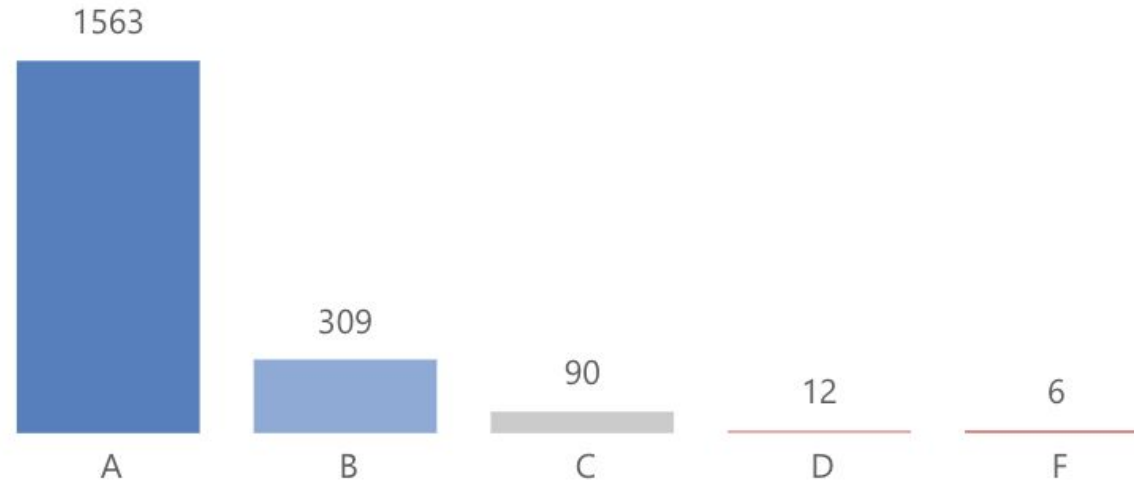
94.5%

% of Grades that are A or B

97.8%

% Passing All Courses

Grades by Simple Grade



Grade 6: Percentage of Grades Earned



95.2%

% of Grades that are A or B

99.2%

% Passing All Courses

Grades by Simple Grade



Grade 7: Percentage of Grades Earned



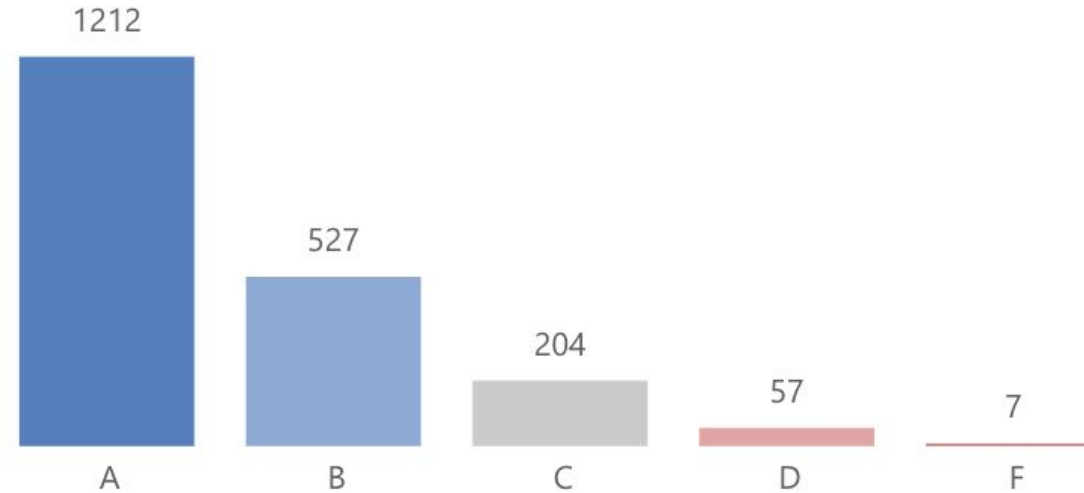
86.6%

% of Grades that are A or B

98.0%

% Passing All Courses

Grades by Simple Grade



Grade 8: Percentage of Grades Earned



The High
School
Data





As of March 9th:

- There is a **3.7% increase** in student daily attendance over **SY24**
- There is a **2.7% increase** in student daily attendance over **SY25**
- There has been a decrease of **1,977 tardies** over **SY23**
- There has been a decrease of **1,418 tardies** over **SY24**

**High School
Average Daily
Attendance**



High School

PBIS Climate STUDENT



The scoring scale is based on a 1-4 range

- For SY26 students ratings increased by 1.3%. The largest increases from SY25 to SY26 were:
 - Order and Discipline by 3.9%
 - Peer Social Support by 2.8%

SCHOOL CLIMATE SURVEY: STUDENT					
GEORGETOWN HIGH SCHOOL					
CLIMATE SURVEY ITEMS:					
	12/5/2024 - 12/20/2024	5/23/2025 - 6/4/2025	10/8/2025 - 10/17/2025	Comparison 5/25 - 10/25	
1. SCHOOL CONNECTEDNESS	2.68	2.78	2.74	-1.40%	
2. PEER SOCIAL SUPPORT	3.18	3.19	3.28	2.80%	
3. ADULT SOCIAL SUPPORT	3.04	3.04	2.98	-2%	
4. CULTURAL ACCEPTANCE	2.77	2.88	2.92	1.40%	
5. SOCIAL/CIVIC LEARNING	3.61	3.6	3.57	-0.08%	
6. PHYSICAL ENVIRONMENT	2.64	2.64	2.85	8%	
7. SCHOOL SAFETY	3.38	3.43	3.42	0.03%	
8. ORDER AND DISCIPLINE	2.81	2.8	2.91	3.90%	
OVERALL SCORE	3.02	3.05	3.09	1.30%	

High School

PBIS Climate STAFF



The scoring scale is based on a 1-4 range

- For SY26 staff ratings increased overall by 3% over SY25
- Compared to SY25 the highest rating increase were
 - Peer Adult Relations by 8.6%
 - Physical Environment by 7.3%
 - Structure for Learning by 5.4%

SCHOOL CLIMATE SURVEY: STAFF					
GEORGETOWN HIGH SCHOOL					
CLIMATE SURVEY ITEMS:					
	12/3/2024 - 12/20/2024	5/18/2025 - 5/23/2025	10/8/2025 - 10/17/2025	Comparison 5/25 - 10/25	
1. STAFF CONNECTEDNESS	3.23	3.25	3.16	-2.80%	
2. STRUCTURE FOR LEARNING	3.25	3.12	3.29	5.40%	
3. SCHOOL SAFETY	3.34	3.41	3.37	-1.20%	
4. PHYSICAL ENVIRONMENT	3.21	3.15	3.38	7.30%	
5. PEER/ADULT RELATIONS	2.7	2.55	2.77	8.60%	
6. PARENT INVOLVEMENT	2.66	2.69	2.74	1.90%	
OVERALL SCORE	3.08	3.03	3.12	3%	

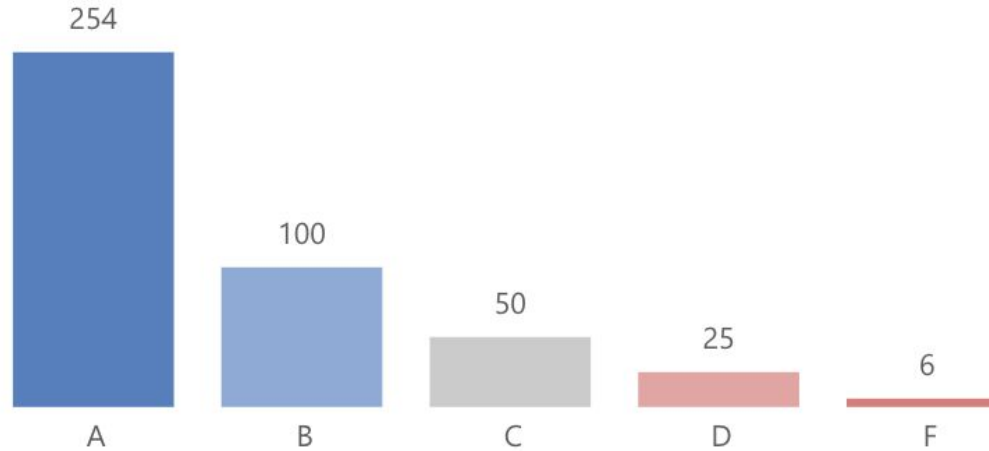
81.4%

% of Grades that are A or B

94.4%

% Passing All Courses

Grades by Simple Grade



Average GPA changed from a 3.33 at the end of first quarter to a 3.23



Grade 9: Percentage of Grades Earned

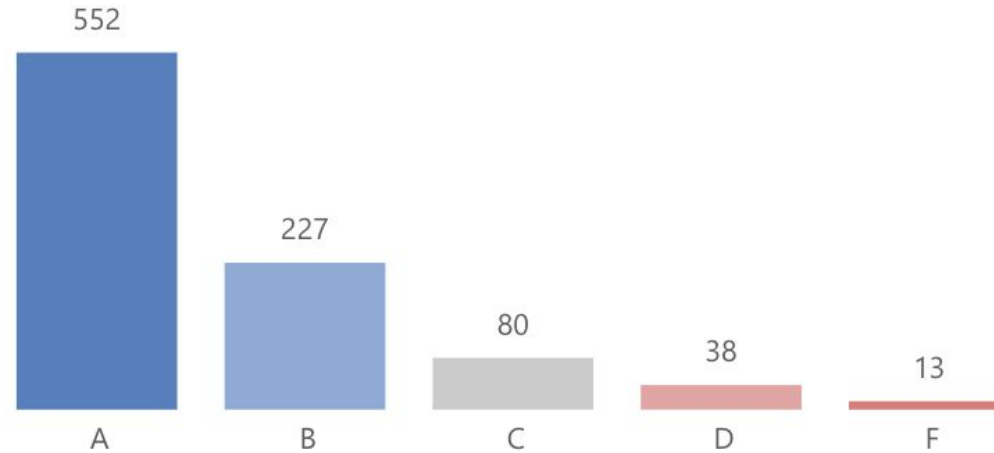
85.6%

% of Grades that are A or B

96.1%

% Passing All Courses

Grades by Simple Grade



Average GPA changed from a 3.43 at the end of first quarter to a 3.23



Grade 10: Percentage of Grades Earned

78.7%

% of Grades that are A or B

96.0%

% Passing All Courses

Grades by Simple Grade



Average GPA
changed from a 3.17
at the end of first
quarter to a 2.95

Grade 11: Percentage of Grades Earned



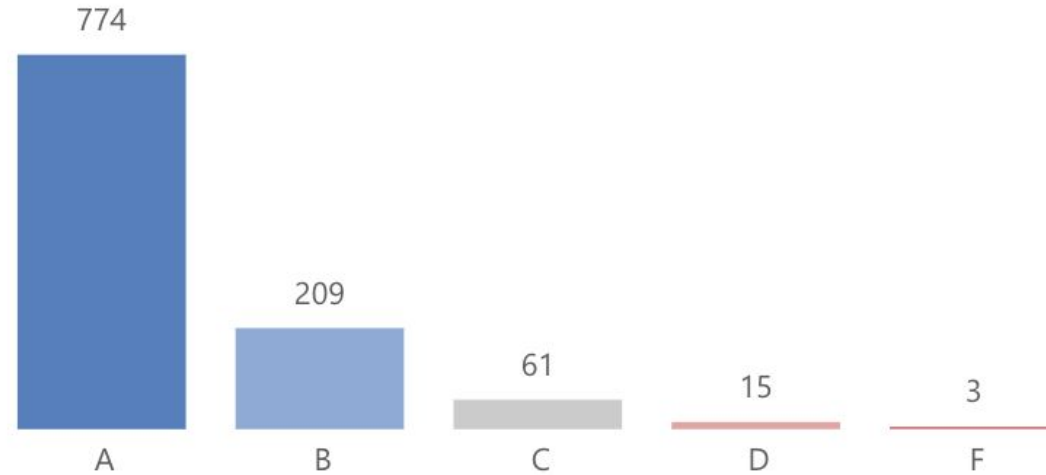
92.6%

% of Grades that are A or B

98.5%

% Passing All Courses

Grades by Simple Grade



Average GPA changed from a 3.58 at the end of first quarter to a 3.48



Grade 12: Percentage of Grades Earned



Thank You!